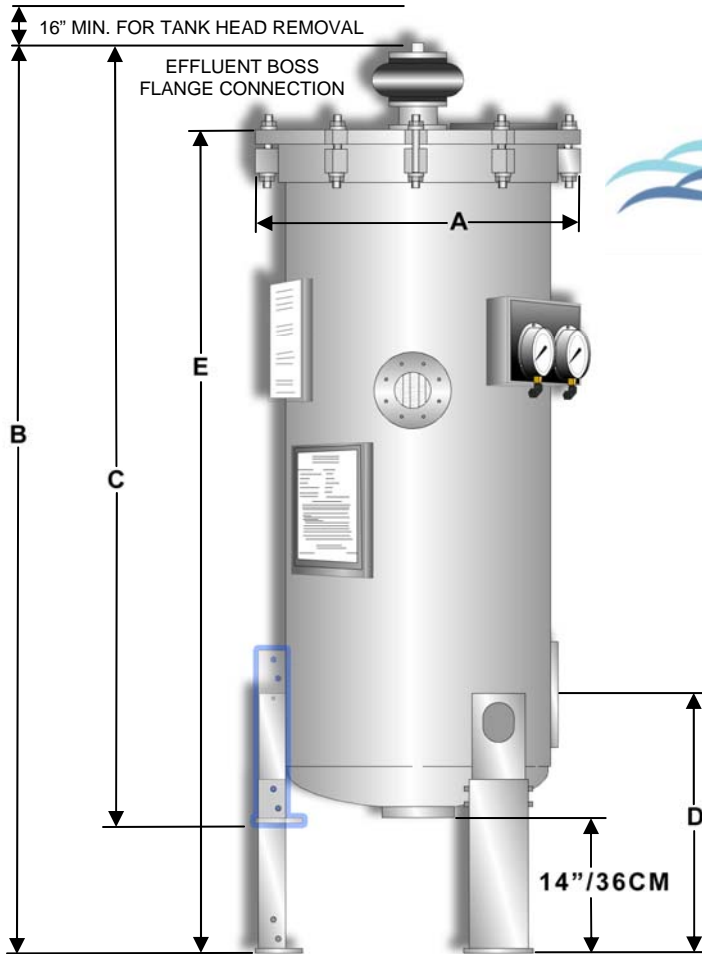


Defender Automatic Regenerative Media Filters

Filter Model Sizing Information, Dimensions & Capacities



- Tabulated data represents standard non-ASME construction.
- Consult Neptune~Benson for verification on ASME certified and custom fabricated vessels.
- All systems have collapsible legs for shipping purposes.
- Outside dimension of the tank equals A + 6" (A + 15.25 cm).
- Head and shell material to be ¼" thick carbon steel.
- Tanks to be lined with Flexsol 3000.

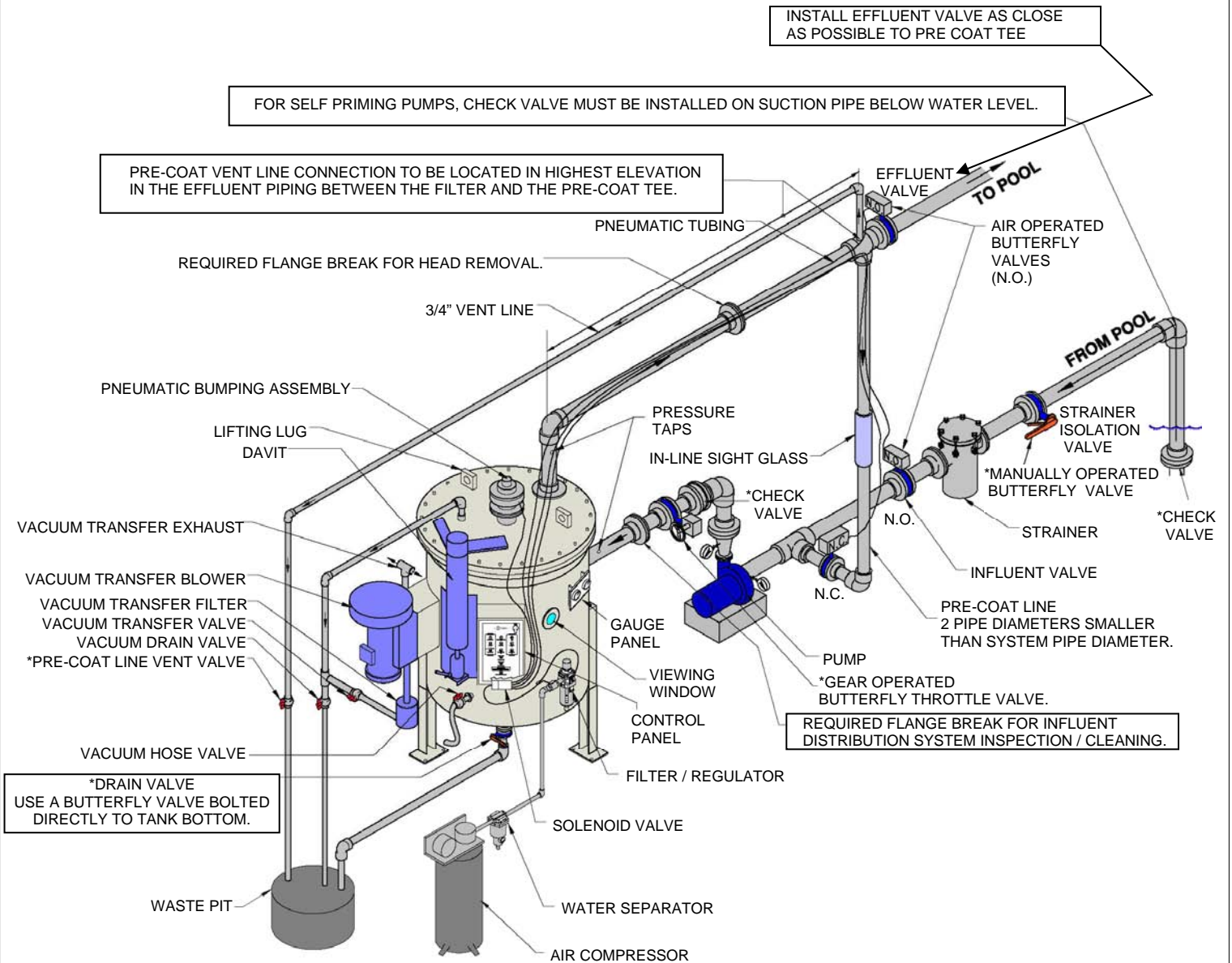
Model Number	A		B		C		D		E		Upper Head Weight		Head & Tubes Weight		Tank Ship Weight		Operating Weight	
	in	cm	in	cm	in	cm	in	cm	in	cm	lb	kg	lb	kg	lb	kg	lb	kg
SP-24-42-327	30 3/4	78.1	90	228.6	76.5*	194.3*	27.5	70	81	205.7	310	141	584	264	1450	658	2515	1141
SP-27-48-487	33 1/4	84.5	95	241.5	81.5*	207*	27.5	70	86	218.5	350	159	660	300	1650	748	2970	1348
SP-33-48-732	39 1/4	99.7	102.5	260.5	89*	226*	31.5	80	93.5	237.5	475	216	790	359	1800	817	3880	1760
SP-41-48-1038	47 3/4	121.3	107	272	93.5*	237.5*	35.5	90	97.5	247.5	750	341	1265	574	2350	1066	6019	2731
SP-49-48-1548	54 3/4	139.1	111	282	96	243.8	36	91.5	101.5	256	1085	493	1920	871	3320	1506	8437	3827
SP-55-48-2076	61 3/4	156.9	116	294.5	96	243.8	39	99	105.5	268	1385	629	2300	1044	3850	1747	10847	4921

*Add 6"/153cm to "C" dimension to calculate shipping height.

Model Number	Filter Area		Maximum Flow Rate		Perlite		Tank Conn. inches (imperial)	Tank Conn. DN	Drain Conn. inches (imperial)	Drain Conn. DN	Tank Volume		Tank Foot Print	
	ft²	m²	gpm*	m³/hr**	lbs	kg					gallons	m³	ft²	m²
SP-24-42-327	230	21.36	384	87.21	18	8.16	4	100	3	80	128	.484	24	2.23
SP-27-48-487	393	36.50	656	148.99	30	13.61	6	150	3	80	159	.602	27	2.5
SP-33-48-732	591	54.90	987	224.17	45	20.41	8	200	3	80	250	.946	33	3.06
SP-41-48-1038	838	77.85	1399	317.74	64	29.03	8	200	4	100	441	1.669	44	4.09
SP-49-48-1548	1250	116.12	2088	474.23	96	43.54	10	250	4	100	615	2.328	58	5.4
SP-55-48-2076	1677	155.79	2800	635.94	128	58.06	12	300	4	100	841	3.184	72	6.7

All dimensions are rounded up to the nearest ½ in / .5cm.
 Maximum Flow Rate *Based on a 1.67 gpm/ft². **Based on 4.079 m³/h / m²
 Nozzle size varies based on velocity not to exceed 10 fps or 3.048 mps
 Listed tank footprint areas take into account rotation of the tank cover for accessing internals





N.O. = NORMALLY OPEN
N.C. = NORMALLY CLOSED

* = INDICATED VALVES ARE PURCHASED SEPARATELY